

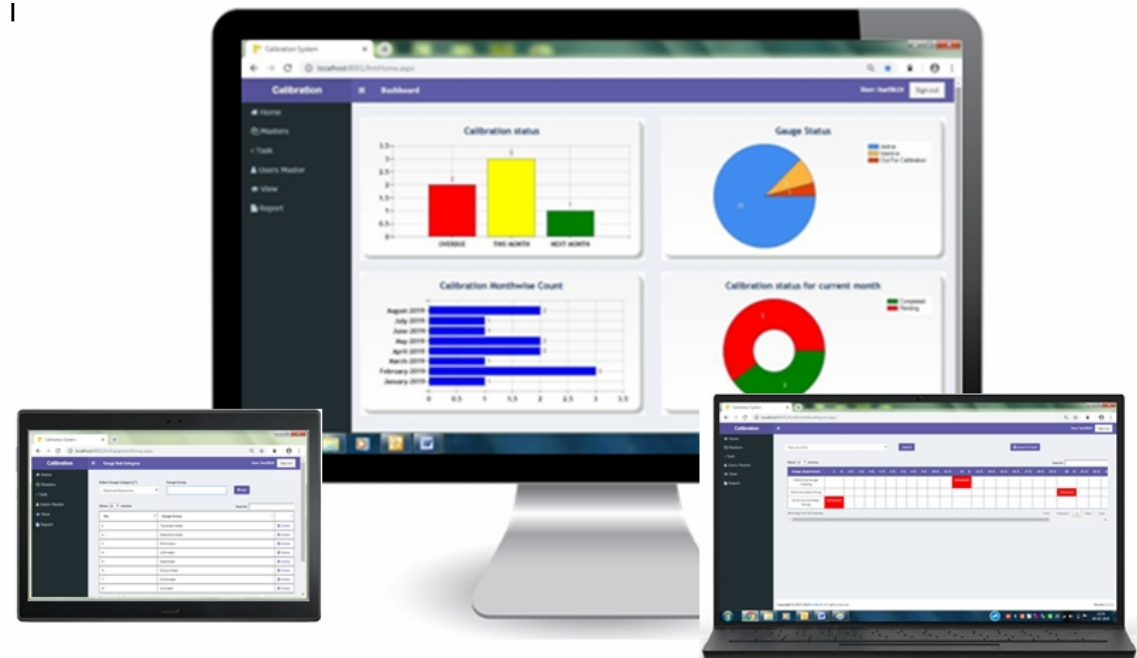
CalMaster calibration management software provides clear visibility for all your Measuring gauges / instruments, while ensuring the quality process is run in an effective way, ensuring regulatory compliance.

CalMaster is easy and simple to use, that provides data to manage, helping them review calibration plan and its adherence. Enabling you to improve overall efficiency of technician and calibration team.

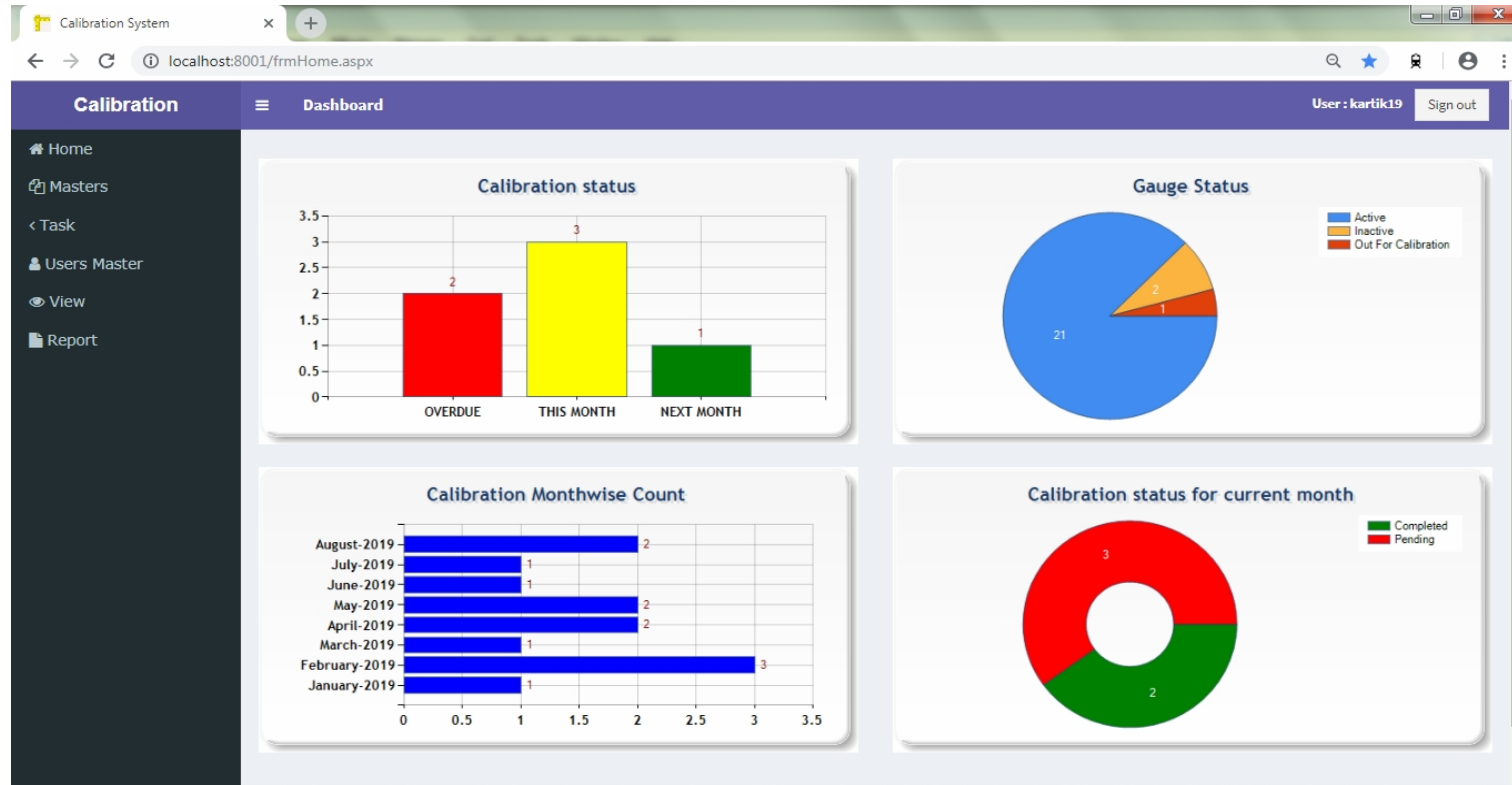
CalMaster helps you to monitor past calibration history, calibration schedule and locate gauge locations, retrieve calibration records, produce calibration certificates and bar-coded calibration labels. CalMaster Provides you with Graphical reports & analysis for MIS needs and Provides Audit trails for traceability.

Web based design enable the software to be accessed from any location in company through secured login that provides access to data as per role defined. The can be used from single user login to multi user.

Calibration Management Software



CalMaster software provides you with real time data on dashboard that makes gauge management so easy...

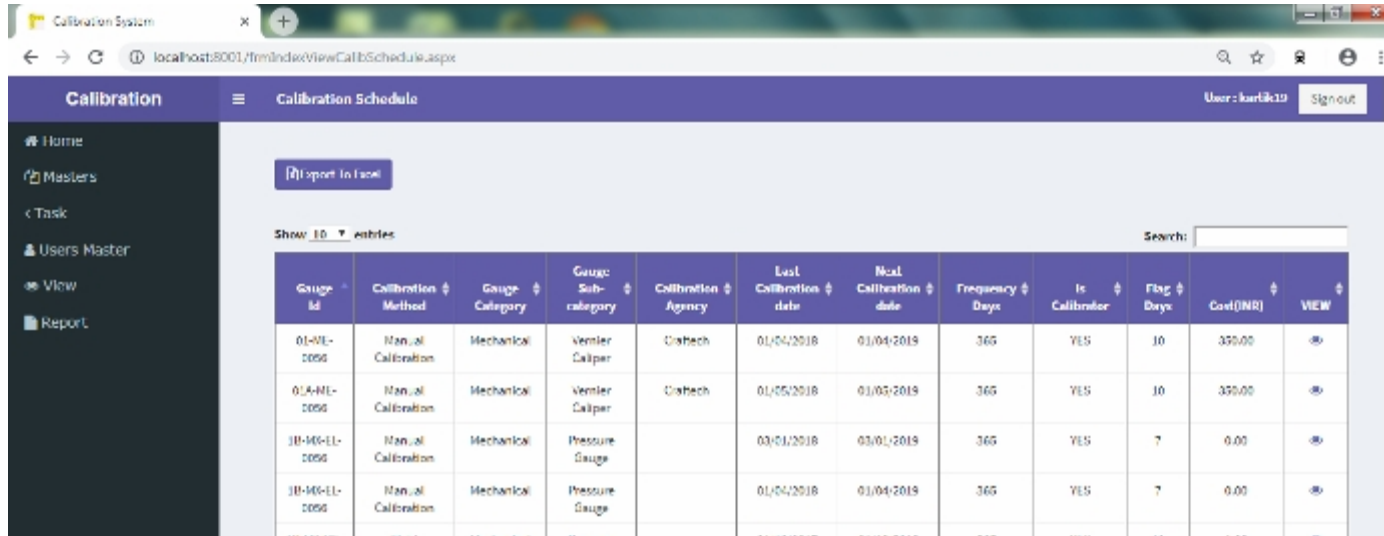


CalMaster user friendly dashboard allows user to quickly identify present calibration status and take actions without wasting time, User can access detail data by simply clicking on the data chart to view further detail

CalMaster helps you in

- Managing gauges/instruments across Plants and location
- KPI on Dash board for fast access of data
- Secure and easy to use
- Helps you better manage your calibration workload,
- Increases Work efficiency of calibration team
- Manage calibration activity more efficiently
- Facilitates Audit trails

CalMast Provides Quick access to calibration schedule that helps plan calibration task with concerned engg or agency.

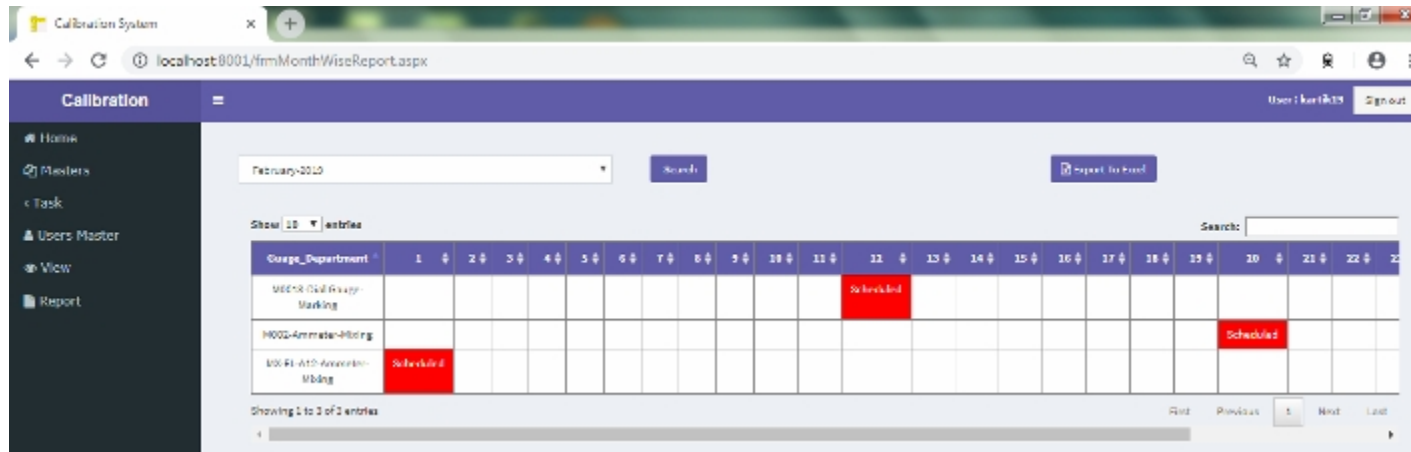


Gauge Id	Calibration Method	Gauge Category	Gauge Sub-category	Calibration Agency	Last Calibration date	Next Calibration date	Frequency Days	Is Calibration	Flag Days	Cost (INR)	VIEW
01-VL-0050	Manual Calibration	Mechanical	Ventur Caliper	Diahech	01/04/2018	01/04/2019	365	YES	10	370.00	VIEW
01-A-NL-0050	Manual Calibration	Mechanical	Ventur Caliper	Diahech	01/05/2018	01/05/2019	365	YES	10	370.00	VIEW
10-M6-EL-0050	Manual Calibration	Mechanical	Pressure Gauge		03/01/2018	03/01/2019	365	YES	7	0.00	VIEW
10-M6-EL-0050	Manual Calibration	Mechanical	Pressure Gauge		01/04/2018	01/04/2019	365	YES	7	0.00	VIEW

Calibration schedule list view

The grid can be filtered to any data and if required be exported to MS Spreadsheet in one click

Monthly calibration Schedule view



Gauge_Dept	1	2	3	4	5	6	7	8	9	10	11	12	13	14	15	16	17	18	19	20	21	22	23	24	25	26	27	28	29	30	31
MECH-Oil Pump-Marking												Scheduled																			
M002-Ammeter-Mining																															Scheduled
M001-Atc-Ammeter-Mining	Scheduled																														

Maintain master calibration equipment data in detail, attach multiple documents to a single equipment like test procedure, Calibration Certificates, drawings, OEM user manual, etc

The screenshot shows the 'Gauge Master' form in the Calibration System. The form is divided into several sections for data entry:

- Gauge Id[*]:** 01-ME-0094
- Description[*]:** Vernier Caliper
- Gauge Category:** Mechanical
- Gauge Sub-Category:** Vernier Caliper
- Manufacturer:** Mitutoyo
- Asset No:** VR002
- Range:** 300mm
- Accuracy:** .01mm
- Sn/Model No:** VR0012
- Specifications:** DIGITAL
- Calibration Source:**
- Calibration Agency:** Craftech
- Plant:** 01
- Plant Line:** A
- Dept/Location:** Manufacturing
- Cost Center:** 4556
- Allotted To:** Kartik
- Email Id(for Calib. Intl.):** kartik@craftech.co.in
- Resolution:** .01mm
- Supplier:** JK agency
- Purchase Date:** 2017-06-06
- Status:** Active
- Document Name:** PD copy

The screenshot shows the 'Gauge Master' list view in the Calibration System. It features a table with the following columns: Gauge Id, Description, Plant Line, Department, Allotted To, Manufacturer, Category, Sub Category, Agency, Status, and VIEW. The table contains 10 rows of data, including various types of gauges like Vernier Calipers, Micrometers, and Pressure Gauges.

Gauge Id	Description	Plant Line	Department	Allotted To	Manufacturer	Category	Sub Category	Agency	Status	VIEW
01-UF-0056	Vernier Caliper	Risult	Manufacturing	Kartik	Mitutoyo	Mechanical	Vernier Caliper	Craftech	Active	
01-UF-0058	Micrometer	Confabactory	Manufacturing	Kartik	Mitutoyo	Mechanical	Micrometer	Craftech	Active	
01-UF-0059	Micrometer	Confabactory	Quality	Kartik	Mitutoyo	Mechanical	Micrometer	Ayodhya	Active	
01A-ME-0056	Vernier Caliper	Risult	Engineering	Kartik	Mitutoyo	Mechanical	Vernier Caliper	Craftech	Active	
01A-ME-0057	Vernier Caliper	Risult	Quality	Kartik	Mitutoyo	Mechanical	Vernier Caliper	Craftech	Active	
1R-ME-0058	Pressure Gauge	Confabactory	Mixing	Sham	Wanic	Mechanical	Pressure Gauge		Active	
1R-ME-0058	Pressure Gauge	Confabactory	Mixing	Sham	Wanic	Mechanical	Pressure Gauge	Craftech	Active	
1R-ME-0057	Pressure Gauge	Confabactory	Mixing	Sham	Wanic	Mechanical	Pressure Gauge		Active	
M001	Pressure Gauge	Bucult	Mixing	Kartik	Wanic	Mechanical	Pressure Gauge	Ayodhya	Inactive	
M0010	Pull Tester	Chips	Coaching	Kartik	W	Mechanical	Pull Pull Tester		Active	

Some Key Features

- Track list of gauges sent out for calibration/repair
- Provides Calibration history log
- Provides multiple status indicators for Due listing and scheduling
- Advance Filter to quickly access gauge calibration data
- Export gauge data to Excel
- Provides notification in advance for due calibration
- Access calibration schedule from dash board
- Easy to use and cost effective
- Enforce calibration procedures.
- Print calibration worksheet and gauge calibration records.
- Attach calibration certificate and access as and when required
- User level access control
- Works on Desktop, Laptop, and Tab.

Calibration software is available with

- Single user
- Five User
- Ten user
- Site License

Concurrent User license

- Single user
- Five User
- Ten user
- Site License

System Requirement:

Hardware requirement : Core 4 Processor, 8 GB RAM, 500 GB Storage

Software: Dot net Framework 4.0, Sql Server 2012 Database,

Operating System: Windows Server 2012 Edition

Browser: Google Chrome, and IE.

We also provide existing master data integration service and free support for 6 months from date of software purchase.

Other services:

We also provide Barcode lable printing solution on thermal Tranfer printer, you can use paper or polyeter sticker for printing.

We also provide barcode scanners for scanning barcode Sticker that enables error free and fast dataentry

Write to us for more information



craftechTM
Enhancing Business Performance

Craftech
354, Mulay I square
Oppsite Siemens,
MIDC Ambad, Nashik- 422010
Email: info@crafftech.co.in